

Influences and Major Trends in Behavioral Health Services: building back better together

Anita Everett MD, DFAPA

Director, Center for Mental Health Services

Substance Abuse and Mental Health Services Administration

U.S. Department of Health & Human Services

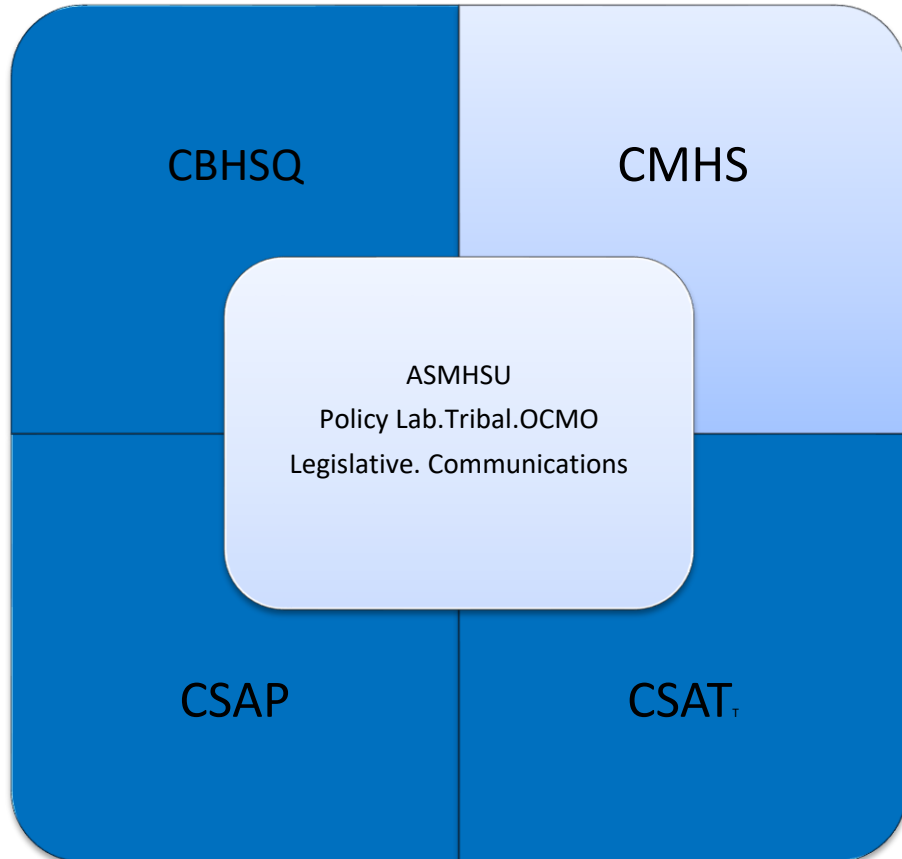


SAMHSA
Substance Abuse and Mental Health
Services Administration

Thinking about Recovery: Threat and Opportunity

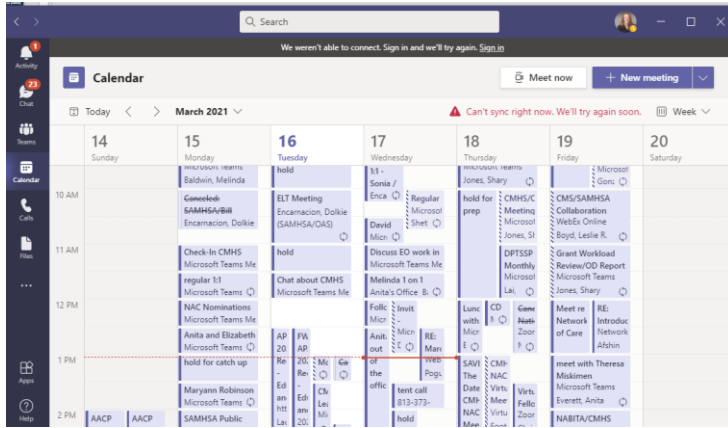


About CMHS



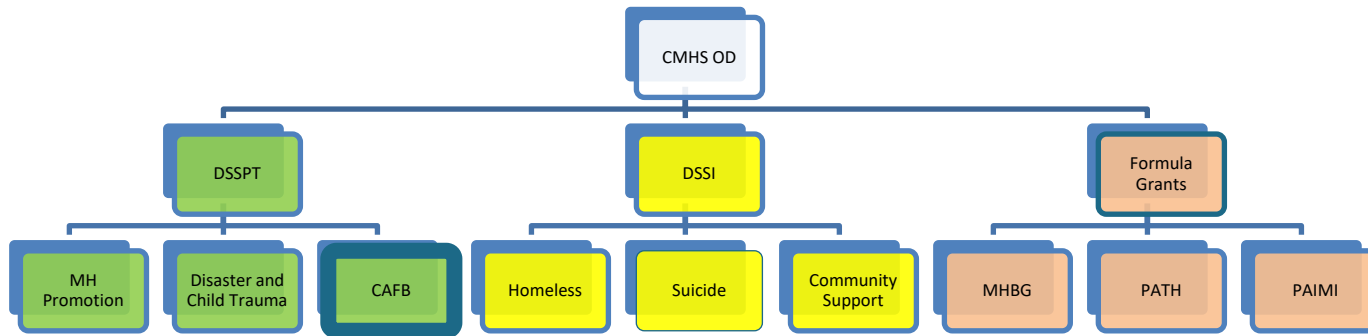
- 45 different types of Discretionary Grants
- Manage a total of 1745 grants
- 3 main types of formula grants (BG, PATH, PAIMI)
- 2021 FY budget: \$1.8b
- Covid adds \$2.6b+\$2b

Internal to CMHS



Building

- Positive work environment
- Affiliations
- Advancement



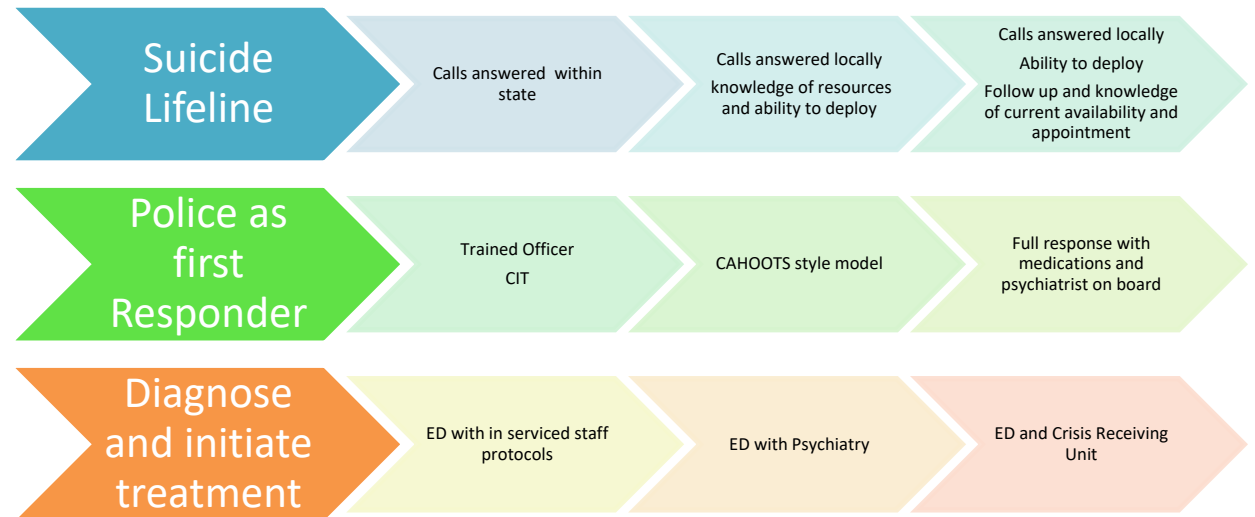
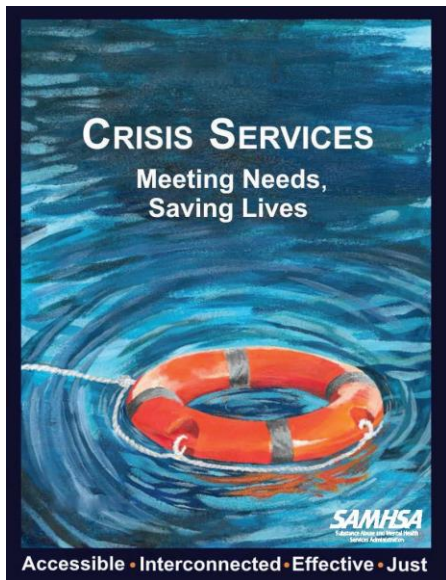
Amanda Gorman

The new dawn blooms as we free it
 For...there is always light
 if only we're brave enough to see it,
 if only we're brave enough to be it.

988 and Crisis Services Support



- Mental Health Block Grant 5% Set aside
- What does a person in crisis need?
 - Someone to talk to
 - First Responder
 - Place to go: ED, Crisis Receiving and Stabilization Center
 - Follow up



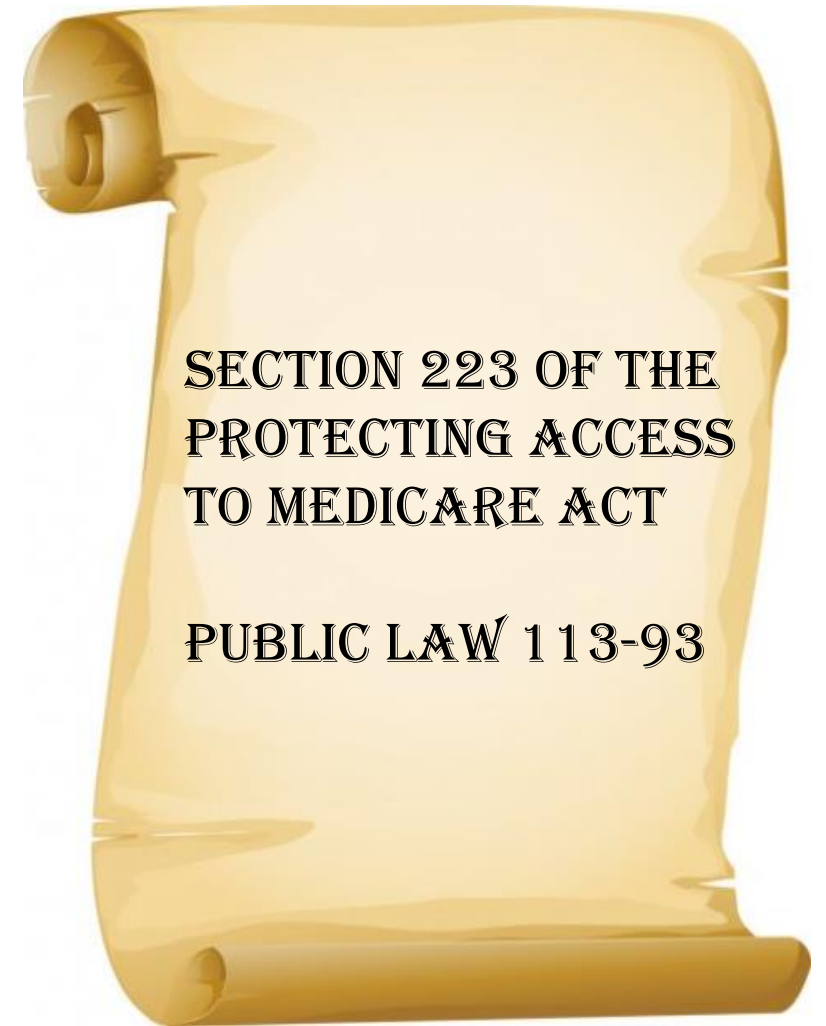
Brief History of the CCBHC-E

CCBHCs were originally authorized in the Protecting Access to Medicare Act (PAMA) of 2014. The Act directed the:

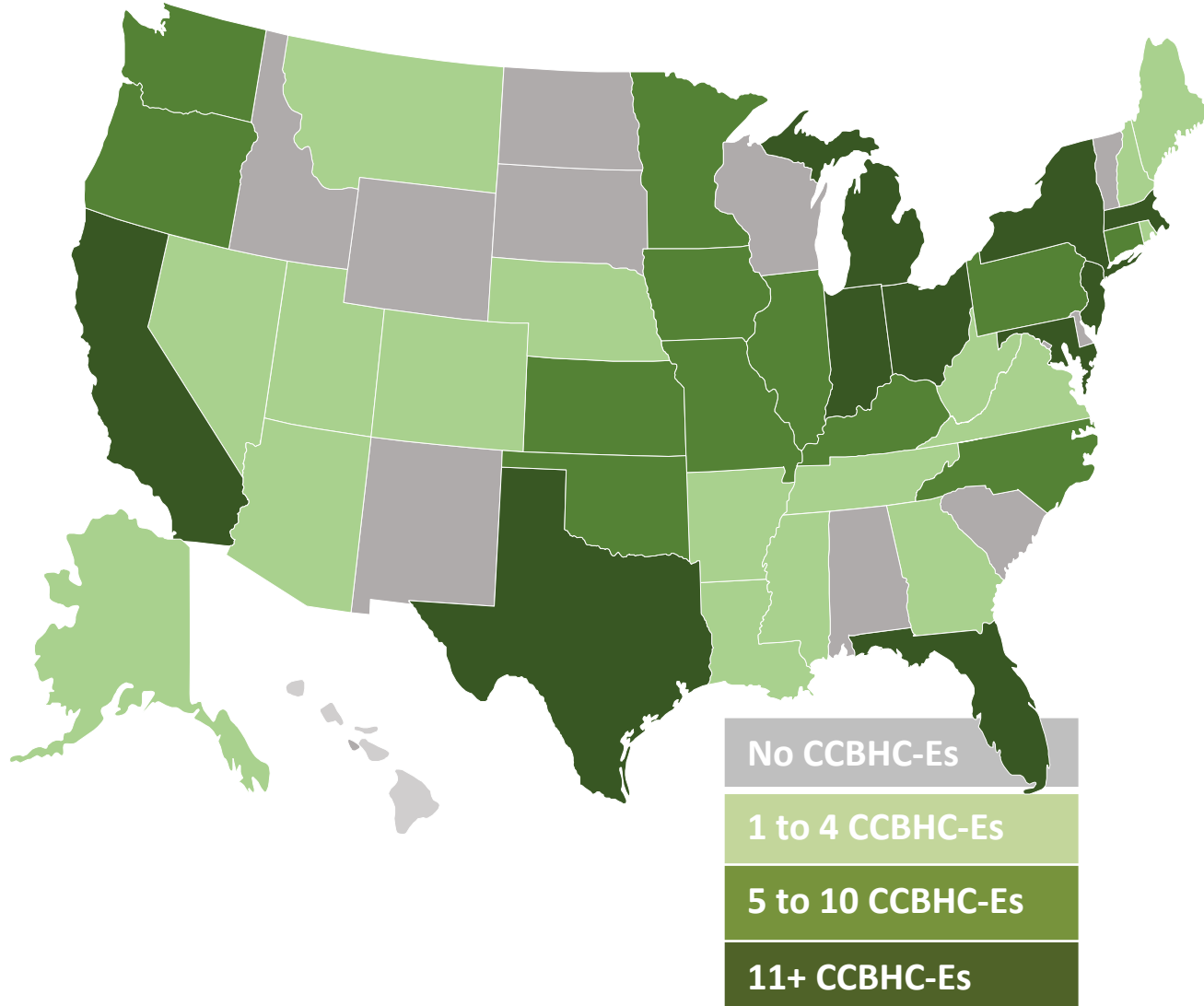
- Development of certification criteria
- Establishment a one-year planning grant program
- Authorization of a two-year CCBHC Medicaid Demonstration program (2017 – 2019)

In fiscal year (FY) 2018, SAMHSA was appropriated \$100 million to administer the CCBHC-Expansion (CCBHC-E) grants.

- CCBHC-E funding was awarded directly to clinics
- States were awarded funding in the demonstration and planning programs



Current Number of Active CCBHC-Es Per State



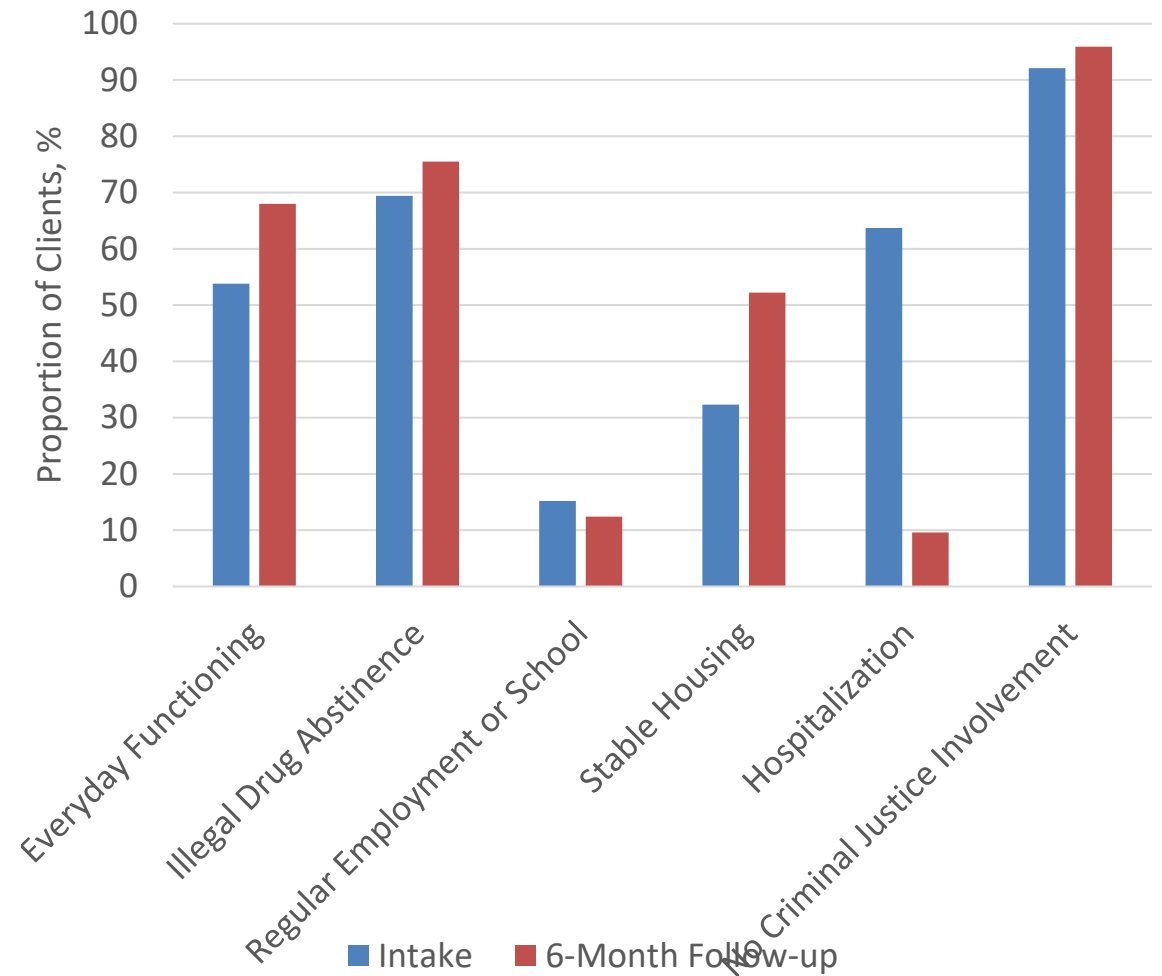
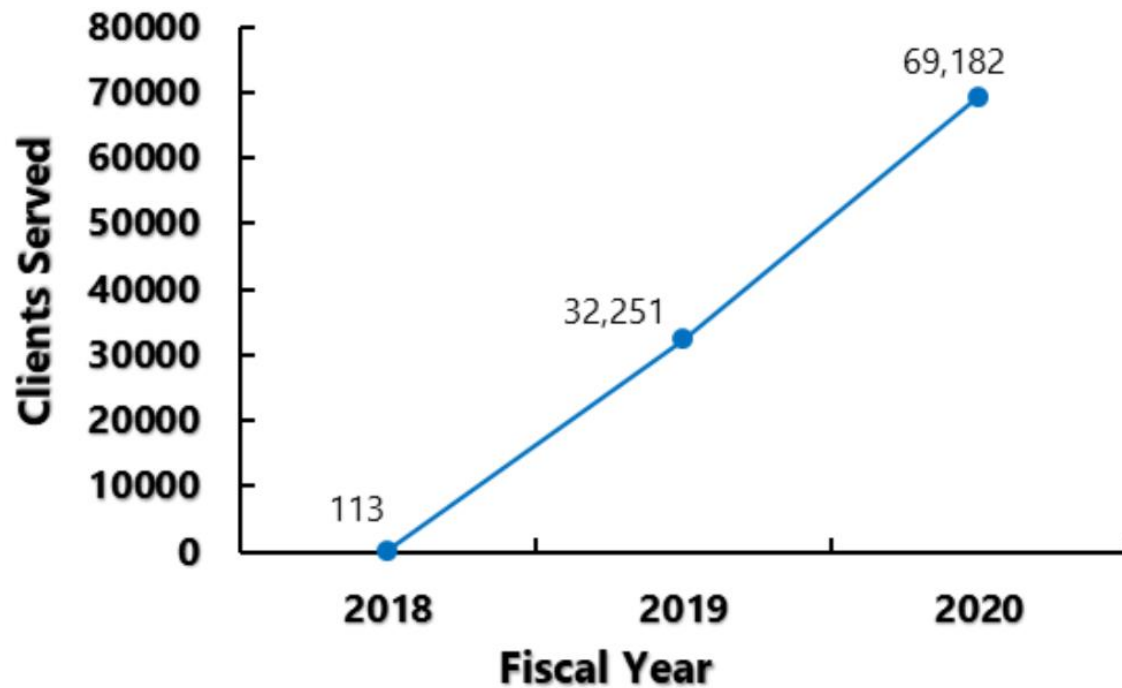
CCBHC required Services:

- Crisis Services
- Treatment Planning
- Screening Assessment, Diagnosis, and Risk Management
- Outpatient Mental Health and Substance Use Services
- Targeted Case Management
- Outpatient Primary Care, Screening, and Monitoring
- Community-Based Mental Health Care for Veterans
- Peer, Family Support, and Counselor Services
- Psychiatric Rehabilitation Services

CCBHC-E Grants and Funding

Fiscal Year	Funding	# Grants Awarded	Project Start	Project End	Funding
2018	96,718,053	52	9/30/2018	9/29/2020	CMHS Annual Budget Funds
2019	23,123,704	12	12/1/2018	11/30/2020	CMHS Annual Budget Funds
2020	196,814,768	102	5/1/2020	4/30/2022	CMHS Annual Budget Funds
2020	249,657,910	64	5/1/2020	4/30/2022	COVID Funds
2021	488,779,245	134	2/15/2021	2/14/2023	COVID Funds
2021	250,000,000	100	7/29/2021	7/28/2023	CMHS Annual Budget Funds
2022 pb	375,000,000				Presidents Budget

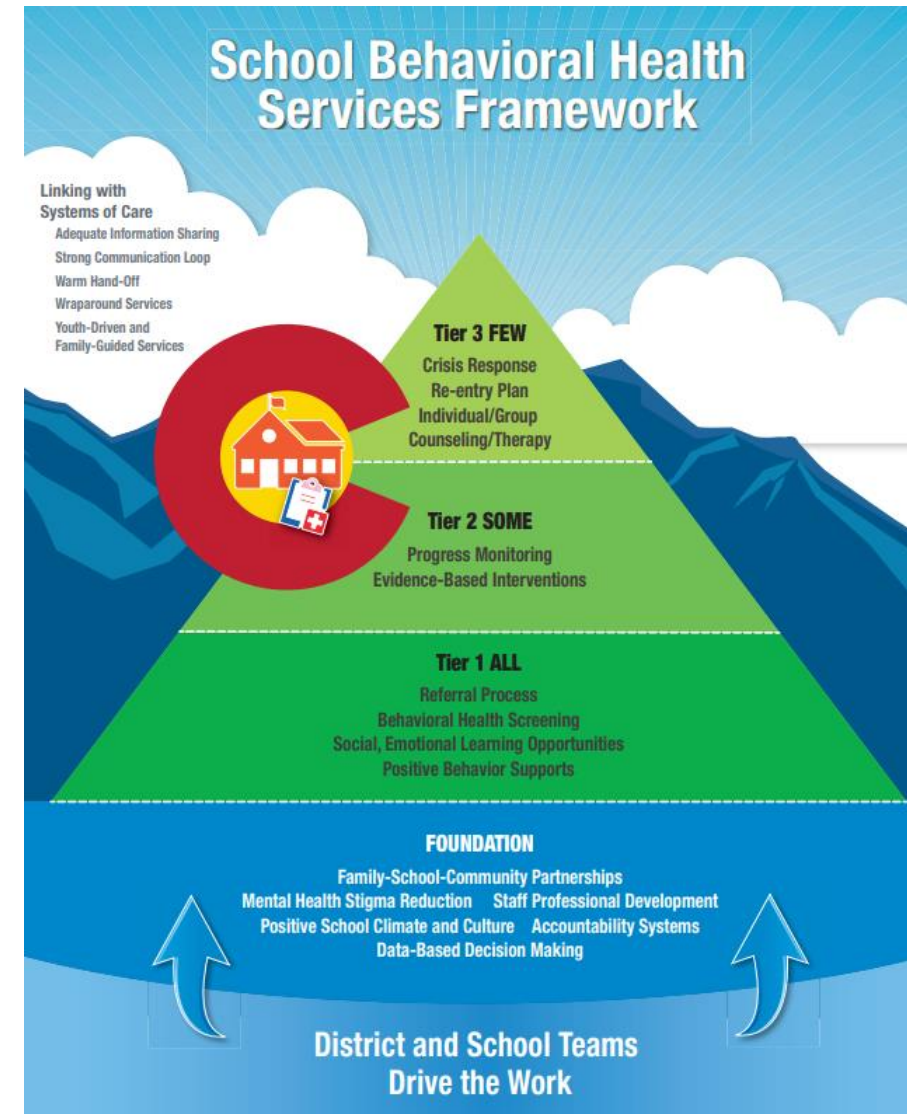
CCBHC Growth and Outcomes



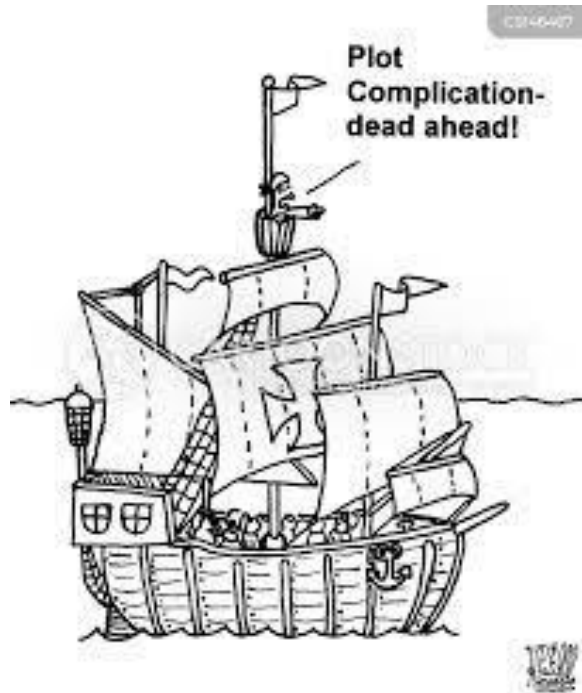
AWARE: Advancing Wellness and Resiliency in Education



**46 states
are or have been
Aware grantees**



Looking to the future:



- Tele-services
- Equity and Inclusion
- CCBHC
- 988 Crisis services and access
- School based multi tiered programming

Thank You

SAMHSA's mission is to reduce the impact of substance abuse and mental illness on America's communities.

www.samhsa.gov

1-877-SAMHSA-7 (1-877-726-4727) • 1-800-487-4889 (TDD)