

# NDBH Panel:

*Effective funding and reimbursement strategies to support needed workforce initiatives*

**James E. Hussey, M.D.**

Medical Director

**Janice Petersen, Ph.D.**

Deputy Assistant Secretary

**Kristin Savicki, Ph.D.**

Child Clinical Systems Lead

**Louisiana Office of Behavioral Health**

October 31, 2018

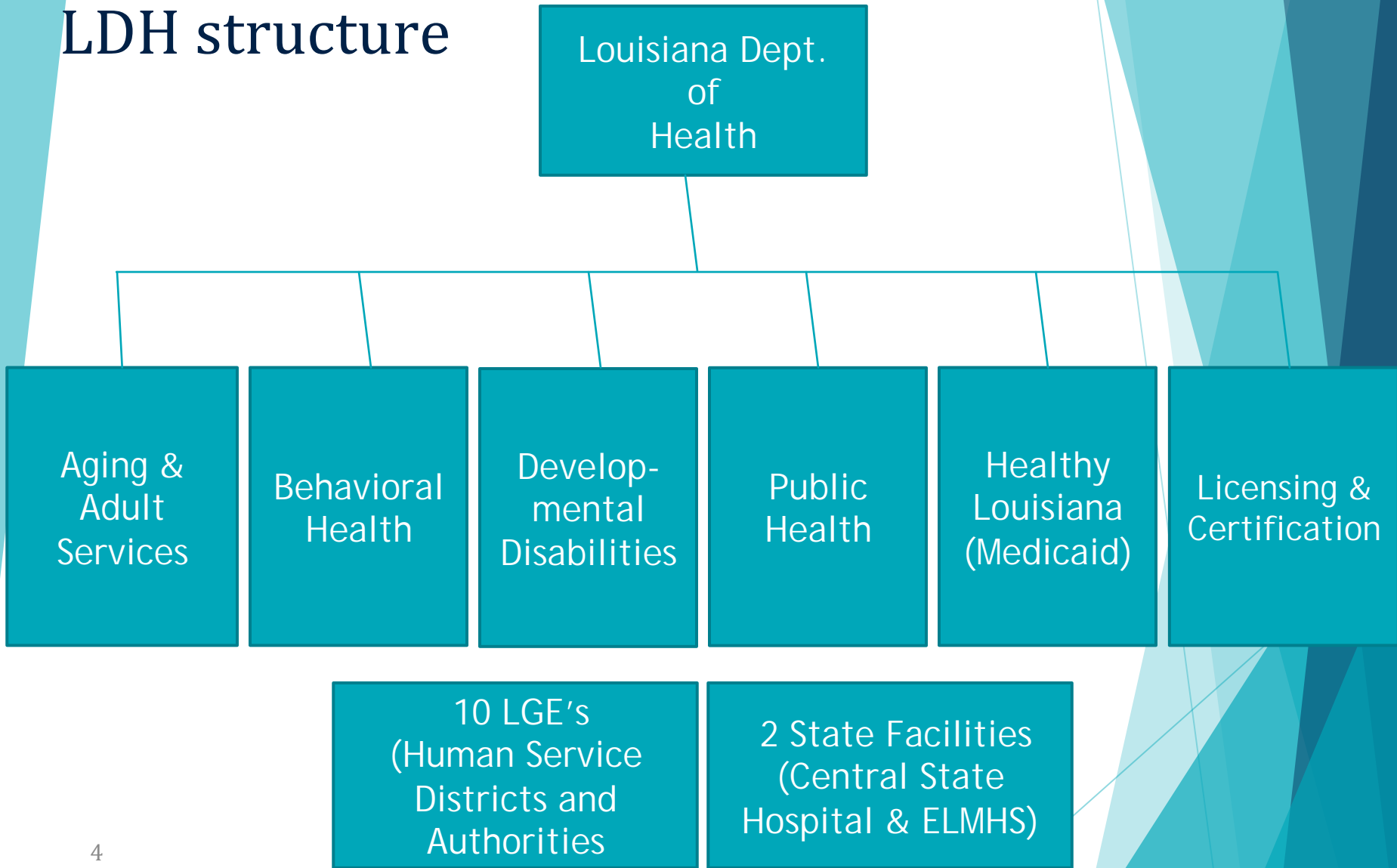
# Content Overview

- ▶ Acquaint participants with LDH/OBH structure
- ▶ Familiarize audience with current network capacity and OBH approach to workforce development
- ▶ Discuss special initiatives for working with targeted populations

# **Office of Behavioral Health**

## **Services, Processes and Continuum of Care**

# LDH structure



# Role of the Office of Behavioral Health

OBH is charged with the oversight and management of behavioral health services for the following populations:

- ▶ **Adults with a severe mental illness (SMI)**
- ▶ **Children and adolescents with a serious emotional/behavioral disorders (SED)**
- ▶ **Adults and children experiencing an acute mental illness**
- ▶ **Adults and children with substance use & addictive disorders**

# **Role of the Office of Behavioral Health** (continued)

**Services are provided for:**

- ▶ **Medicaid, non-Medicaid eligible populations, private pay, and self-pay**
- ▶ **Including those served through Healthy Louisiana Plans, Mental Health and Substance Abuse Block Grants, additional grant funding, and state general funds.**

# **OBH Services/Programs :**

## **Contracts with LGEs and/or Community Providers**

- ▶ Prevention Programs, including focus on Rx and Suicide Prevention**
- ▶ Substance Use Treatment**
- ▶ TANF Women & Children Residential Programs**
- ▶ MAT (Opioid Treatment Services)**
- ▶ Problem & Compulsive Gambling Treatment**

# **OBH Services/Programs :**

- ▶ **Tobacco Cessation**
- ▶ **Oxford House Recovery Homes Support**
- ▶ **CABHI – Housing Program – Homeless / SUD Conditions**
- ▶ **PATH – Project for Assistance in Transition from Homelessness**
- ▶ **SOAR- SSI/SSDI Outreach, Access and Recovery**
- ▶ **8 Competency Restoration**



# Direct MH Treatment Services

## Medicaid Billable Services

- Residential Level MH Services:
  - Inpatient Psychiatric Hospital Services
  - Psychiatric Residential Treatment Facilities
  - Therapeutic Group Homes
- Community Level MH Services:
  - Licensed Mental Health Practitioner Services:
    - Individual, Family & Group Psychotherapies

# Direct MH Treatment Services

## Medicaid Billable Services

- Rehabilitation Option Services:
  - Community Psychiatric Support & Treatment
    - EBP's
    - Multi-Systemic Therapy
    - Functional Family Therapy
    - Home Builders
    - Assertive Community Treatment
  - Psychosocial Rehabilitation
  - Crisis Intervention

# SUD Treatment Services

## Medicaid Billable Substance Use Treatment Services

### Alcohol and/or Drug Assessment

Alcohol and/or Drug Services (Individual)

Alcohol and/or Drug Services - Group

Alcohol and/or Drug Services - Family

Alcohol and/or Drug Screening

Alcohol and/or Drug Services, Brief Intervention

Psychiatric diagnostic interview examination

Psychiatric Diagnostic Evaluation

Psychiatric Diagnostic Evaluation with Medical Services

Psychotherapy, with patient present

Psychotherapy for crisis

Family psychotherapy without patient present

Family psychotherapy with patient present

Multiple family group psychotherapy

Group psychotherapy

# SUD Services (continued)

## ASAM Levels of Care

1	Outpatient
1-wm (withdrawal management)	Ambulatory Withdrawal Management without Extended On-Site Monitoring
2.1	Intensive Outpatient
2-wm	Ambulatory Withdrawal Management with Extended On-Site Monitoring
3.1	Clinically Managed Low- Intensity Residential Treatment
3.2-wm	Clinically Managed Residential Withdrawal Management
3.3	Clinically Managed Population- Specific High-Intensity Residential
3.5	Clinically Managed High- Intensity Residential Treatment
3.7	Medically Monitored Intensive Inpatient Treatment
3.7-wm	Medically Monitored Inpatient Withdrawal Management
4-wm	Medically Managed Intensive Inpatient Withdrawal Management

# For Full Medicaid Covered Service Listing, Visit:

[http://new.dhh.louisiana.gov/assets/docs/BayouHealth/  
BHIntegration/  
SpecializedBehavioralHealthFeeScheduleRevised12.27.16.pdf](http://new.dhh.louisiana.gov/assets/docs/BayouHealth/BHIntegration/SpecializedBehavioralHealthFeeScheduleRevised12.27.16.pdf)

# Office of Behavioral Health

## Network Capacity and Approach to Workforce Development

# Core Competencies

Sustainability of any network and individual providers within it are built on the general competencies of:

- **A full continuum of care**
- **An integral part of the larger whole health model**
- **Consumer access**
- **Quality clinical practices**
- **Sound administrative/business practices**
- **Diverse payor mix**

# Network Capacity Assessment (NIATx)

Services to  
address social  
determinants of  
Health

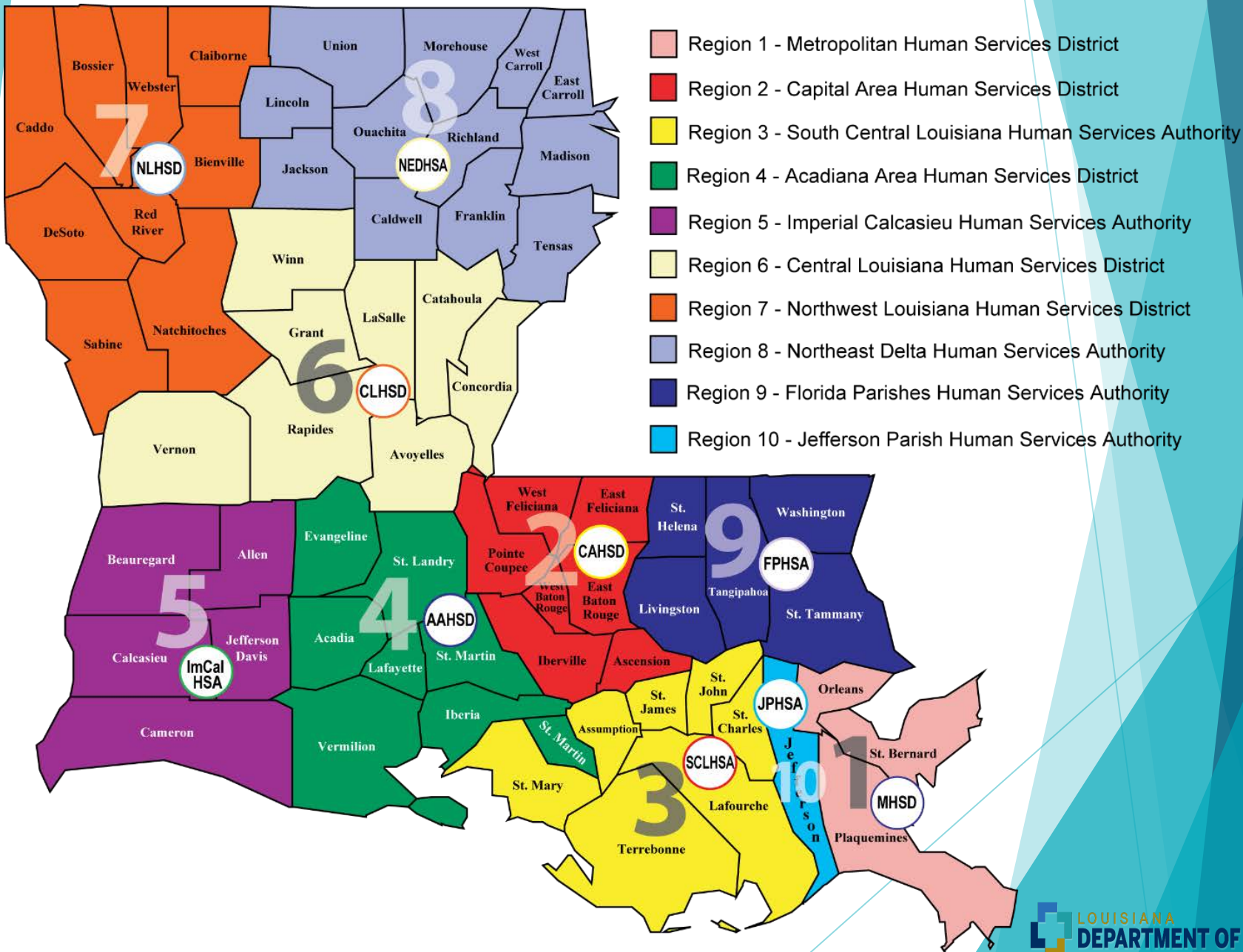
Linkage to  
community  
resources

Primary care  
access

Employment  
support

Housing support



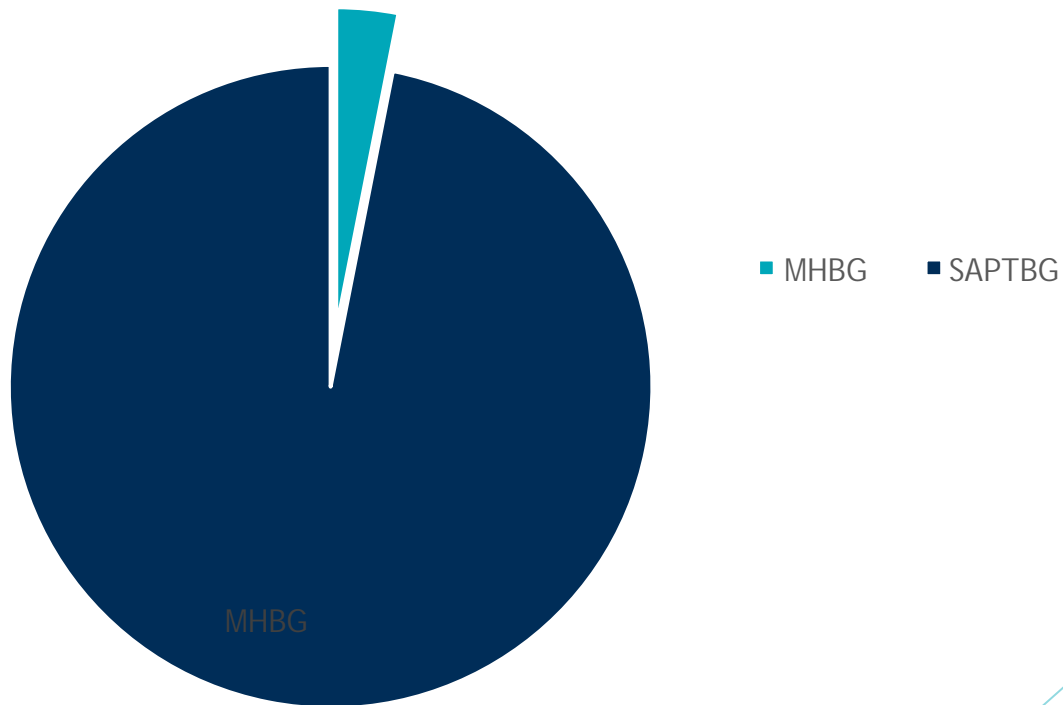


# Over-all increase of Louisiana Licensed Mental Health Professionals

Title	Number 2016	Number 2018	Avg Age 2016	Avg Age 2018
LPC	3233	3579	55	48
PLPC	1025	998	36	
LMFT	695	748	55	
PLMFT	71	50	33	
Med Psychologist	56	126	56	
RSW	1532	1602	43	42
LCSW-BACS	835	909	54	54
LCSW	2783	3058	52	52
CSW	352	398	36	35
LMSW	2247	2398	42	42

# Funding Mechanisms

## Federal Grants



# Access To Funding Mechanisms

- ▶ **Substance Abuse  
Prevention and  
Treatment Block Grants**
- ▶ **Community Mental  
Health Block Grant**
- ▶ **State General Funds**

# Access To Funding Mechanisms

## Discretionary Grants:

- ▶ **SPF-RX**
  - ▶ **Partnership for Success**
  - ▶ **MAT-PDOA**
  - ▶ **ATR**
  - ▶ **Opioid Grants: STR and SOR**
- SAMHSA Technical Assistance Grants**

# Access To Funding Mechanisms

## Specific Funding EBPs:

- ▶ **Motivational Interviewing**
- ▶ **SBIRT**
- ▶ **MATRIX Model**
- ▶ **Mental Health/Psychological First Aid**

# Expanding Trainer Network

- Behavioral Health Summit
- Prevention Conferences
- Professional Development Opportunities for State Staff
- Leveraging collaborations with stakeholders
- Managed Care Organizations

# ***Suicide Prevention: Expanding Training Network***

**Financing Strategy: *Mental Health Block Grant funds***

- ▶ **Funds used for workforce development to train instructors and provide initial materials.**

**Current Status:**

- **23 new Applied Suicide Intervention Skills Training (ASIST) trainers trained 709 participants to provide suicide first aid**
- **11 new safeTALK trainers were able to train 138 participants to be more suicide alert, ask about suicide and connect others to help**
- **Partnering with community agencies to sustain training**



# SUICIDE PREVENTION

## Results:

- ▶ **New ASIST trainers completed at least 35 trainings and reached 709 participants to become 'ready, willing and able' to provide suicide first aid**
- ▶ **safeTALK trainers completed at least 19 trainings and reached at least 138 individuals to become suicide alert and know how to recognize signs of suicide, how to ask about it and how to connect to assistance**
- ▶ **CEUs approved for SWs and Psychologists**

## **Peer Recovery Support: Expanding Trainer Network**

- **Specialized training for Peers**
- **OBH provided national training model for credentialing peers**
- **Cadre of 395 -2018 count**
- **Employed in variety of settings, including MCOs**

# Office of Behavioral Health

Special Initiatives  
for Working with  
targeted populations

# *Special initiatives for working with targeted populations*

- ▶ Children under age 6 in need of evidence-based behavioral therapy
- ▶ Youth with co-occurring developmental disabilities and behavioral health treatment needs
- ▶ Multi-system-involved youth experiencing residential care
- ▶ Suicide Prevention: Expanding capacity to train in alertness & first aid

# *Special Initiatives:* EBPs for Children Under age 6

EBP models of therapy offer the State:

- ▶ Assurance of fidelity to models with proven outcomes
- ▶ Monitoring of outcomes to assure the value of services provided.

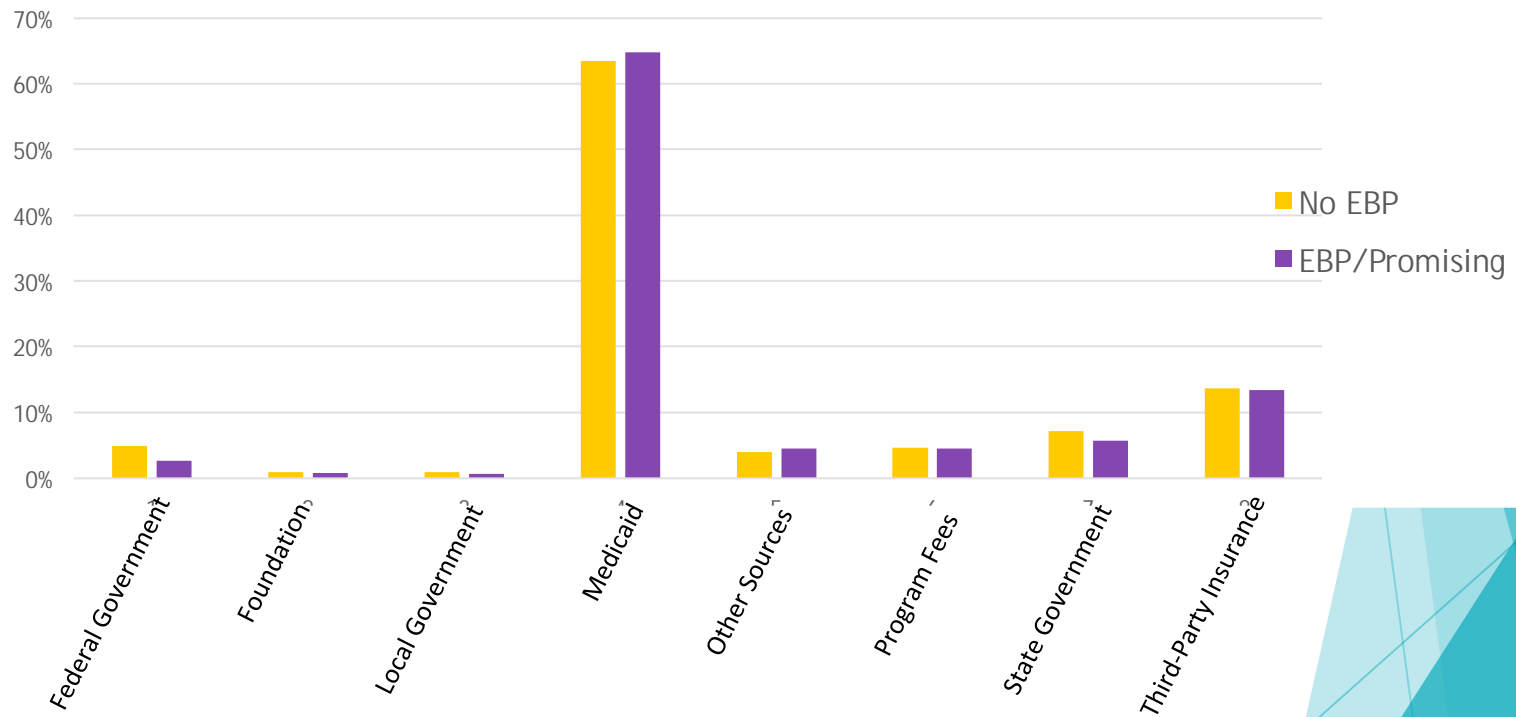
## **Current Status:**

Currently-implemented EBP programs for youth in Louisiana produce and are accountable for good outcomes for kids.

OBH commissioned a study in 2017 to assess EBP provision in the state, gaps and priorities for workforce development.

# EBP Survey: Results

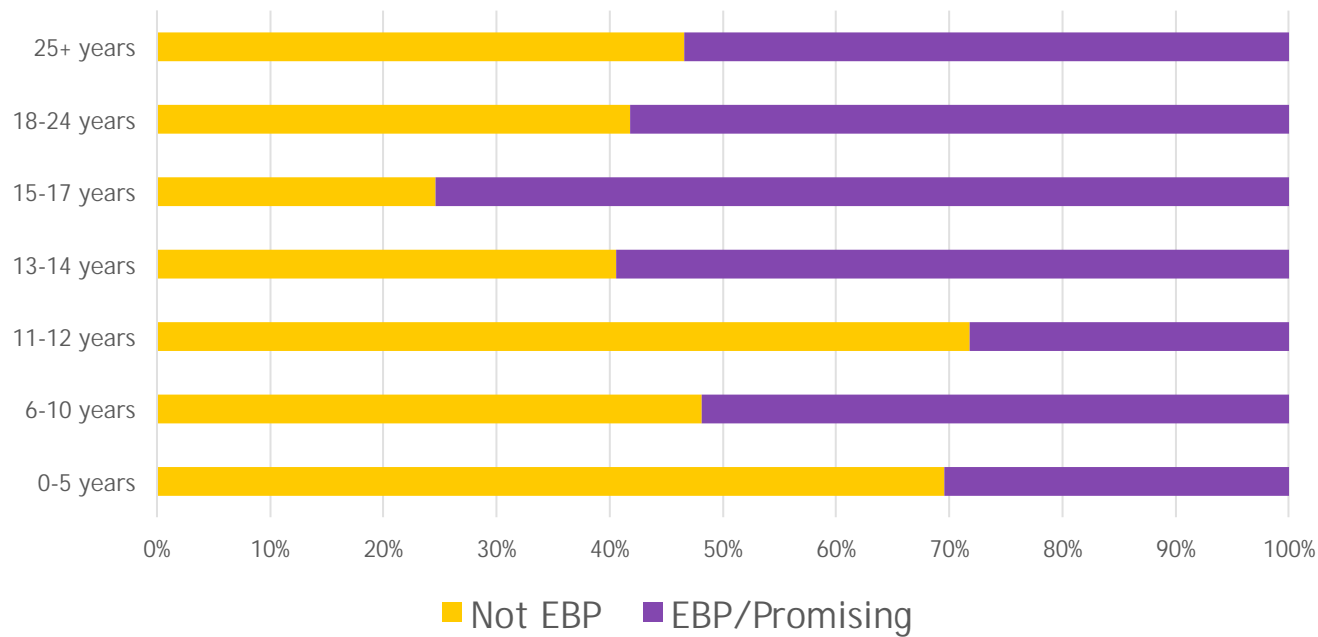
## Likelihood of EBP/Promising Practice by Funding Sources



Source: State of Our Services for Youth- Survey of Louisiana Providers  
Stephen Phillippi, PhD, LCSW. LSUHSC School of Public Health.  
August 18, 2017

# EBP Survey: Results

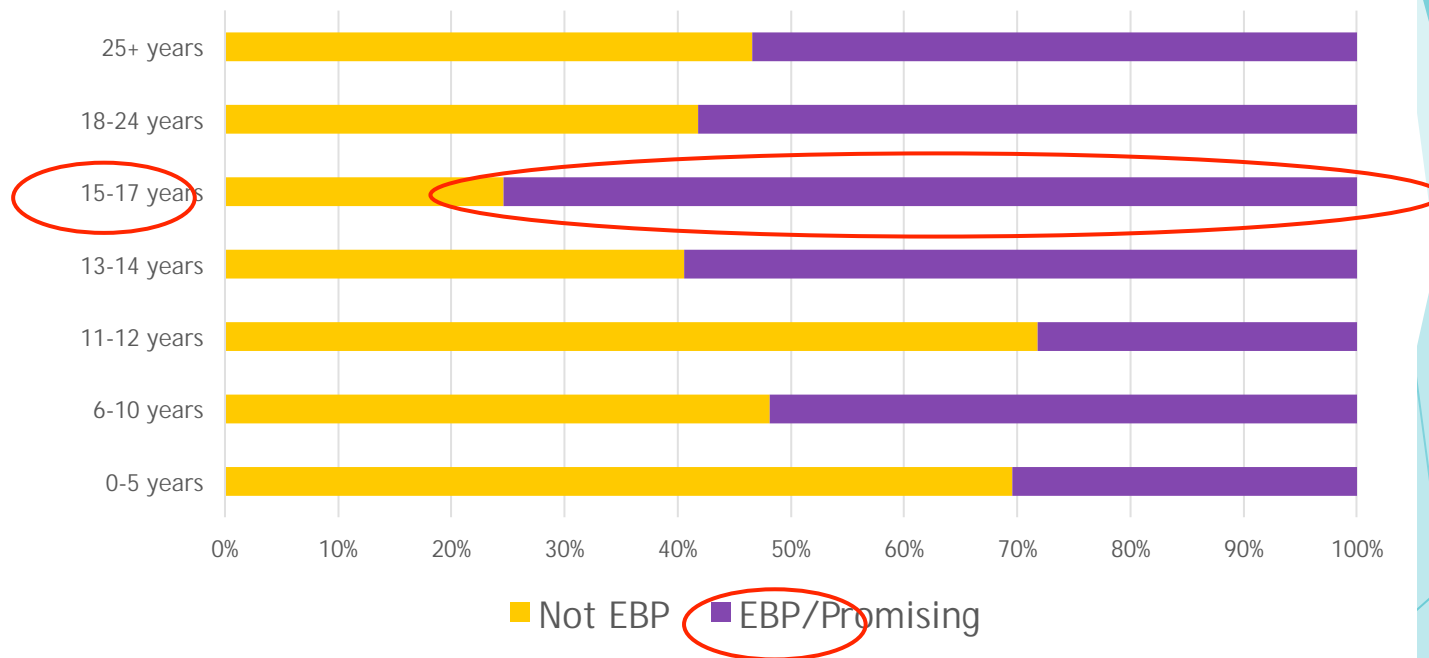
## Likelihood Programs Serving Age Groups are an EBP



Source: State of Our Services for Youth- Survey of Louisiana Providers  
Stephen Phillippi, PhD, LCSW. LSUHSC School of Public Health.  
August 18, 2017

# EBP Survey: Results

## Likelihood Programs Serving Age Groups are an EBP

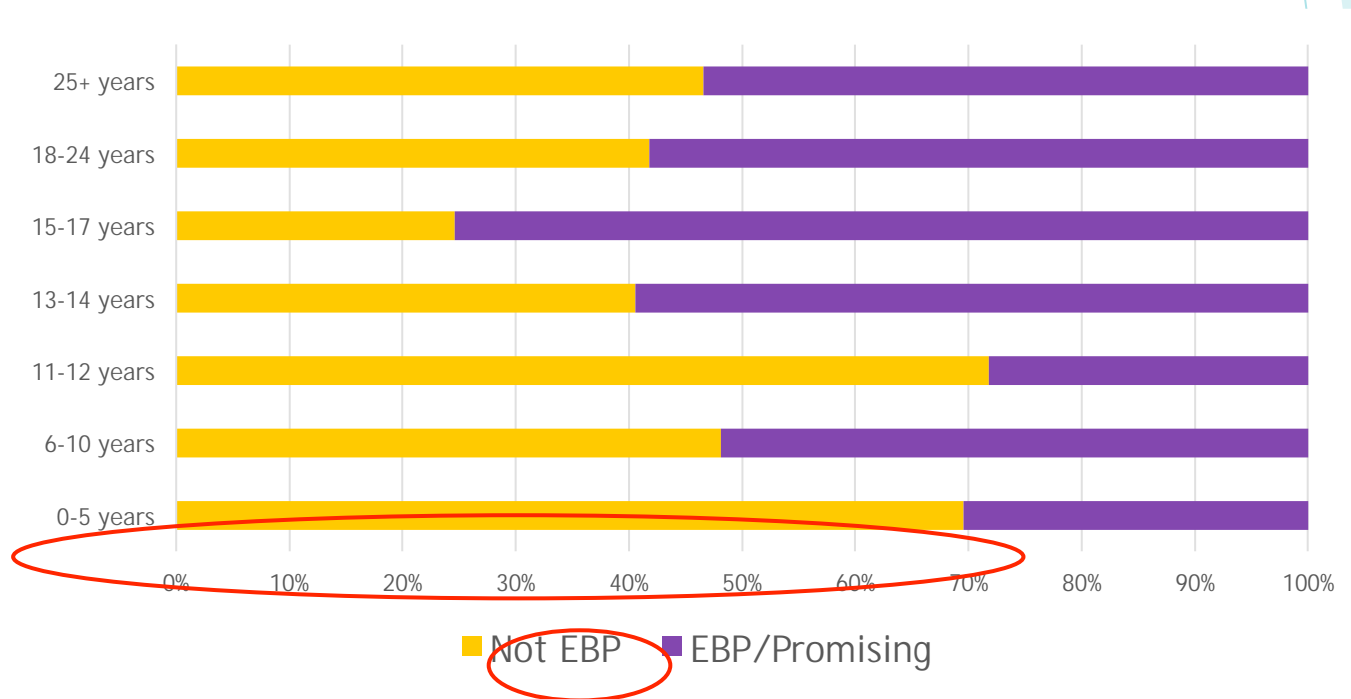


Source: State of Our Services for Youth- Survey of Louisiana Providers  
Stephen Phillippi, PhD, LCSW. LSUHSC School of Public Health.  
August 18, 2017



# EBP Survey: Results

## Likelihood Programs Serving Age Groups are an EBP



Source: State of Our Services for Youth- Survey of Louisiana Providers  
Stephen Phillippi, PhD, LCSW. LSUHSC School of Public Health.  
August 18, 2017

# *Special Initiatives:* EBPs for Children Under age 6

## *Financing Strategy #1: MCO Collaborative*

- ▶ Potential providers of EBPs are shared across all 5 statewide Medicaid Managed Care Organizations.
- ▶ Strategy:
  - Each MCO sponsors a training for a cohort of therapists in an EBP.
  - All MCOs benefit.
- ▶ OBH role:
  - Coordination
  - Institute service definitions inclusive of fidelity and outcomes monitoring processes to ensure quality

# *Special Initiatives:* EBPs for Children Under age 6

## *Financing Strategy #1: MCO Collaborative*

### **Current Status:**

#### ▶ ***Child Parent Psychotherapy (CPP)***

- LHCC sponsored training in **May 2018** for **35 LMHPs**. Participants in the May training are currently engaged in completing an 18-month consultation process for certification.

#### ▶ ***Preschool PTSD Treatment (PPT)***

- ACLA sponsored a training in Preschool PTSD Treatment (PPT) in Shreveport in **July 2018**; the training was completed by **26 practitioners**. As of August, these practitioners had started the 6-month period of supervision to attain advanced certification.
- ACLA and Healthy Blue plan to co-sponsor another cohort of 50 therapists to be trained in PPT at a later date.

# *Special Initiatives:* EBPs for Children Under age 6

## *Financing Strategy #1: MCO Collaborative*

### **Current Status:**

#### ▶ ***Triple P Parenting Program -Level 4.***

- ACLA and Aetna are co-sponsoring a training in the Triple P Parenting Program (Level 4) scheduled for **January 2019**, for **20 providers**.

#### ▶ ***Parent-Child Interaction Therapy (PCIT)***

- Two MCOs (Healthy Blue and United) are working with OBH and with PCIT International to develop a sustainable strategy for PCIT training in Louisiana. An initial PCIT training in New Orleans is tentatively scheduled for **January 2019**.

# *Special Initiatives:* EBPs for Children Under age 6

## *Financing Strategy #2: Center of Excellence*

Like many other states, Louisiana is interested in a Center of Excellence because....

- ▶ Interest in selecting and implementing interventions and service delivery models that are shown to be effective across the public child- and family-serving systems.
- ▶ Understanding that good clinical outcomes are critically dependent on the quality of implementation.
- ▶ Recognition of a need for assistance with developing creative and sustainable financing plans, as well as managing the implementation and scaling up of EBPs.

# *Special Initiatives:* EBPs for Children Under age 6

## *Financing Strategy #2: Center of Excellence*

- ▶ OBH initiated, Medicaid funding
- ▶ Partnership with a State University
- ▶ New for 2018
- ▶ Will serve as a statewide hub for training of therapists/  
other behavioral health specialists in evidence-based  
models of behavioral health treatment.

## *Special Initiatives:*

# Youth with co-occurring IDD and BH treatment needs

### **Need:**

Engage behavioral health to engage in a workforce development initiative to serve the behavioral health needs of developmentally disabled youth

### **Barrier:**

Little incentive for providers to engage in time-intensive training to serve a complex population

### **Solution:**

Provider Stipends as incentive to providers

## *Special Initiatives:*

# Youth with co-occurring IDD and BH treatment needs

## **Financing Strategy:**

### Grant funding used for Provider Stipends

- ▶ OBH/OCDD received NASMHPD/SAMHSA funding via Transformational Transfer Initiative (TTI) grant award.
- ▶ Bulk of grant funding used as provider stipends to incentivize engagement in and completion of the initiative, including:
  - Agency team completion of didactic training program
  - Agency team completion of a several-month period of case-specific consultation
  - Evidence of increased access to BH services for Medicaid members in the target population



*Special Initiatives:*  
Multi-system-involved youth  
experiencing residential care

Louisiana's Systems goals  
for Residential Treatment  
are aligned with a national  
best-practice approach: the  
**Building Bridges  
Initiative.**



# *Special Initiatives:* Multi-system-involved youth experiencing residential care

**Need:** Enable the factors that result in positive outcomes in Residential Treatment,

- Shorter Lengths of Stay,
- Increased Family Involvement,
- Stability and Support in the Post-Residential Environment

## **Barriers:**

- ▶ Systems disconnects between payers, Child Welfare, residential and community providers
- ▶ Training/Education needed across systems to enable family involvement throughout the residential treatment episode and beyond.



# *Special Initiatives:* Multi-system-involved youth experiencing residential care

**Solution:** Build systems collaboration to address **both** barriers, through:

- ▶ Systems/policy work to better connect Residential and Community providers, payers, behavioral health and child welfare around shared goals and processes, and
- ▶ Training/Education for multiple players to enable family involvement throughout the residential treatment episode.



*Special Initiatives:*  
Multi-system-involved youth  
experiencing residential care

## Building Bridges in Louisiana

- ▶ Initial Training Series for Stakeholders in Residential Treatment
  - ◆ Child-Serving state agencies
  - ◆ Payers: Medicaid MCOs
  - ◆ Providers of both PRTF and TGH services
- ▶ Development of an Oversight Group to plan implementation of BBI principles in policy and practice across systems.
- ▶ Additional/ongoing training and learning collaborative to support providers in implementation.



# Questions and Dialogue

Contact the Office of Behavioral Health

- ▶ (225) 342- 2540
- ▶ OBH website
- ▶ <http://dhh.louisiana.gov/index.cfm/subhome/10>