

Behavioral Health is Essential To Health



Prevention Works



Treatment is Effective



People Recover



Offering Hope for Recovery: Planning, Delivering, and Funding Effective Crisis Services

Paolo del Vecchio, M.S.W., Director
SAMHSA's Center for Mental Health Services

National Dialogues on Behavioral Healthcare
Annual Conference
New Orleans, LA • November 3, 2014



Effective Crisis Response

The components of effective crisis response are simple:

- First and foremost, we must listen.
- We must maintain and strengthen relationships.
- We must empathize with, share, accept, and demystify feelings.
- We must help develop personal power and choices.
- We must reduce harm.
- We must offer hope for recovery.

– Mark Ragins



Behavioral Health at the Crossroads



Current system is:

- Fragmented
- Deficit-based
- Crisis-driven
 - Ineffective
 - Costly
 - Harmful

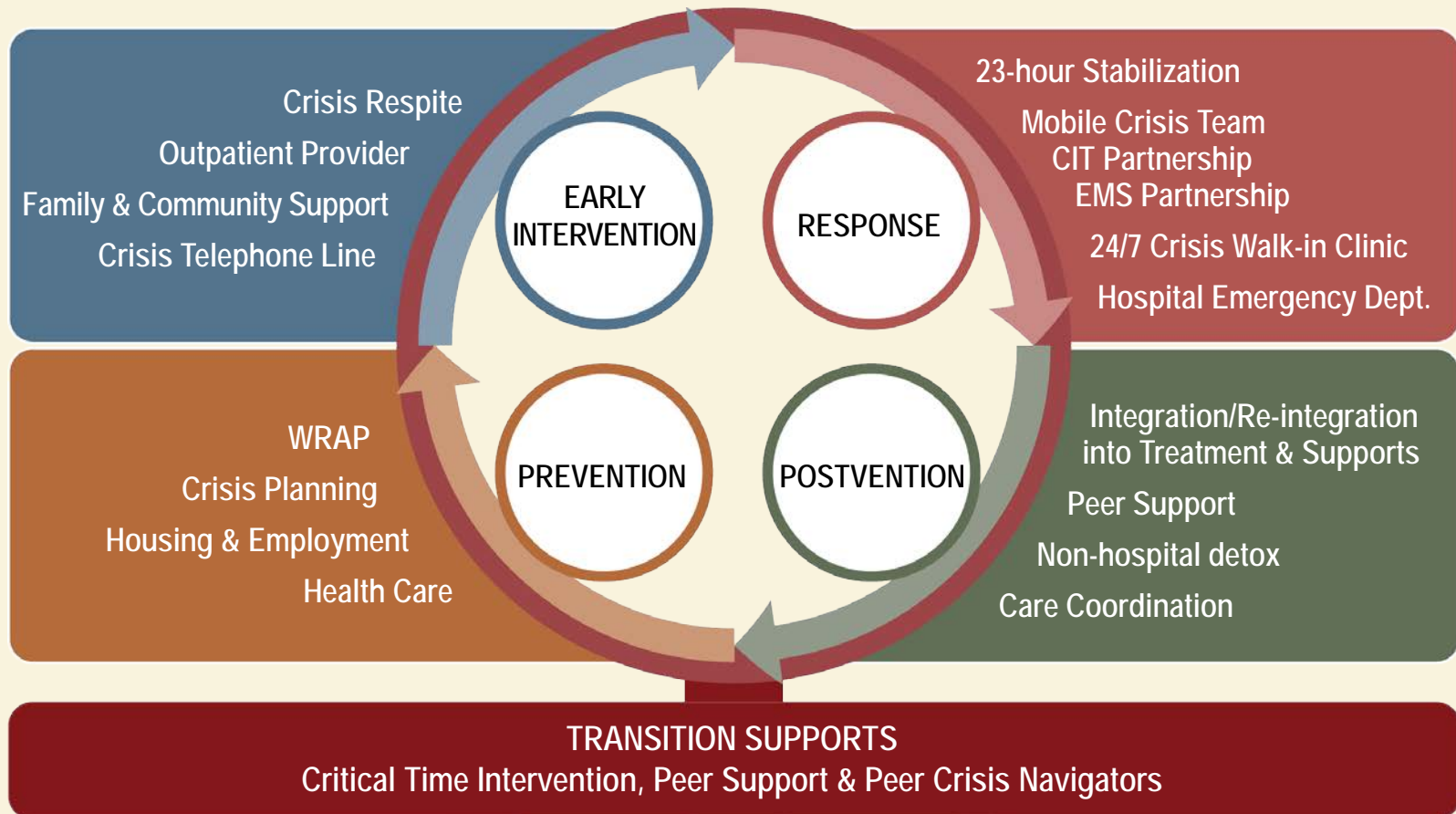
Building Blocks of a Life in Recovery

- Health
- Home
- Purpose
- Community

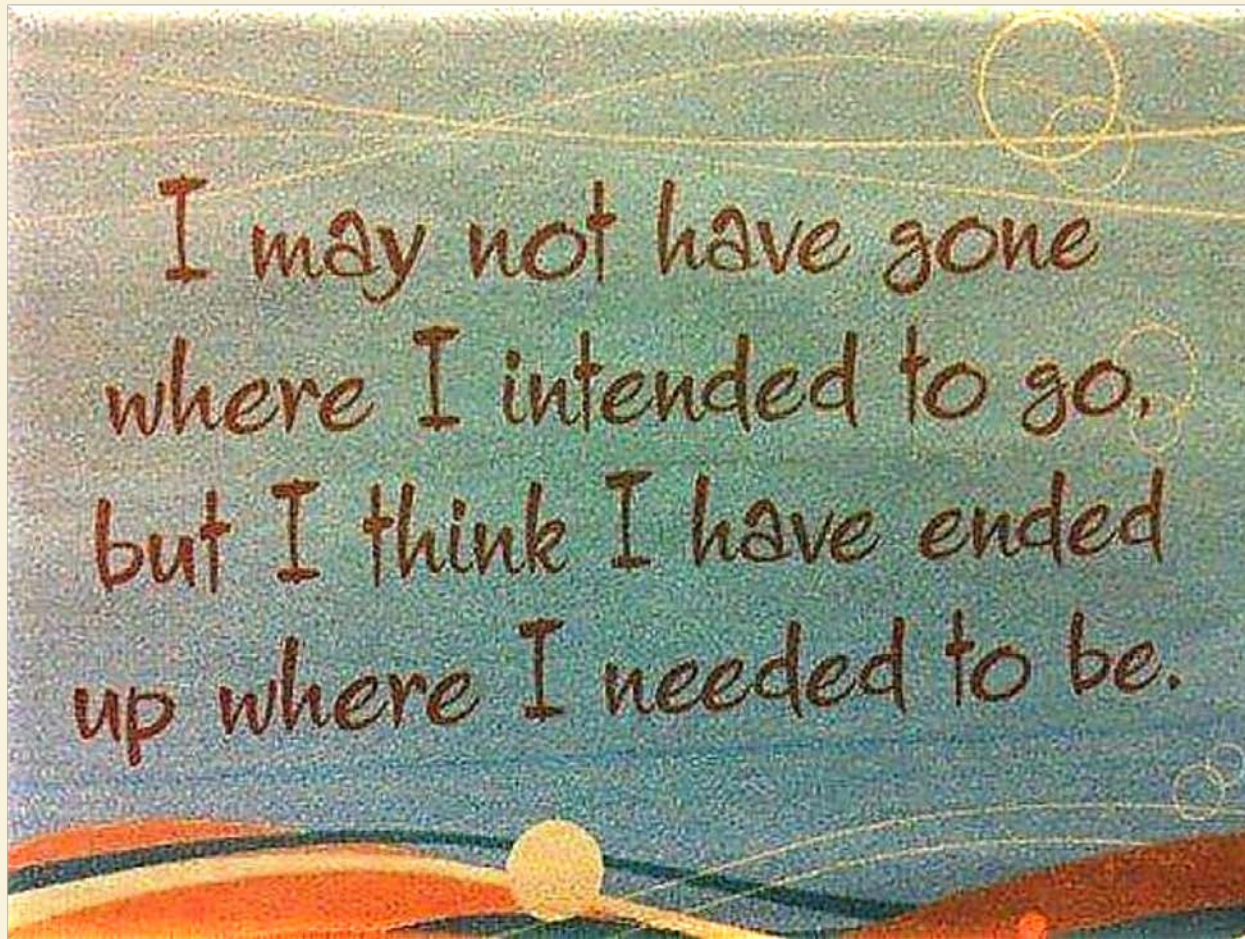


Building a Crisis Services Continuum

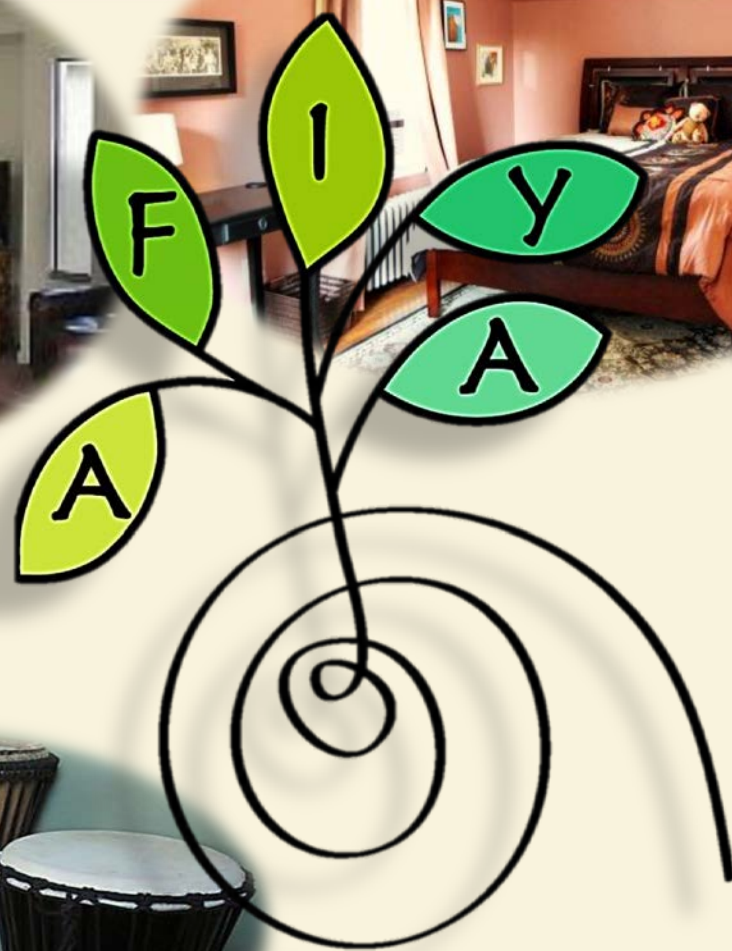
TO MATCH A CONTINUUM OF CRISIS INTERVENTION NEEDS



Finding Hope



Peer Respite



New Hope NOLA



Crisis counselor Enchante Franklin sits in the day room after the opening of a 5-bed respite-bed facility, called New Hope NOLA, at the Metropolitan Human Services District in New Orleans.

– Rusty Costanza, The Times-Picayune

Centers of Excellence

On March 31, 2014, Congress passed the Protecting Access to Medicare Act (H.R. 4302), which included a demonstration program (Section 223) of Certified Community Mental Health Centers (CCBHCs). CCBHCs will increase Americans' access to community mental health and substance use treatment services while improving Medicaid reimbursement for these services.



Preventing Suicide Is Everyone's Business

- *To those who have lost their lives by suicide,*
- *To those who struggle with thoughts of suicide,*
- *To those who have made an attempt on their lives,*
- *To those caring for someone who struggles,*
- *To those left behind after a death by suicide,*
- *To those in recovery, and*
- *To all those who work tirelessly to prevent suicide and suicide attempts in our nation.*
- ***We believe that we can and we will make a difference.***

– Dedication from the 2012 National Strategy for Suicide Prevention

Home



“The ache for home lives in all of us, the safe place where we can go as we are and not be questioned.”

— Maya Angelou

Work Is Important

“We don’t have to become less symptomatic before returning to work.”



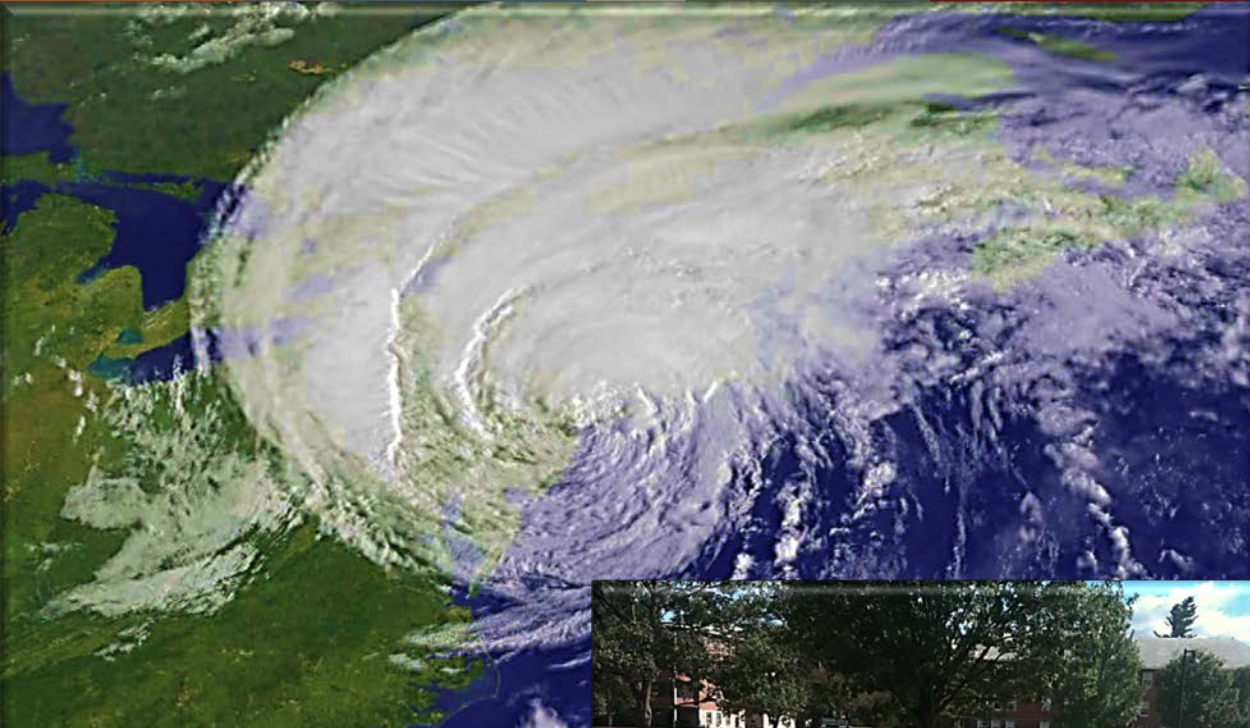
Recovery Takes Place In Community

“There must be safe, nurturing communities in which people have opportunities for ***meaningful work, real education, quality housing, and continuing care*** that maintains health and well being. We all suffer when people with behavioral health problems do not fully participate in community life.”

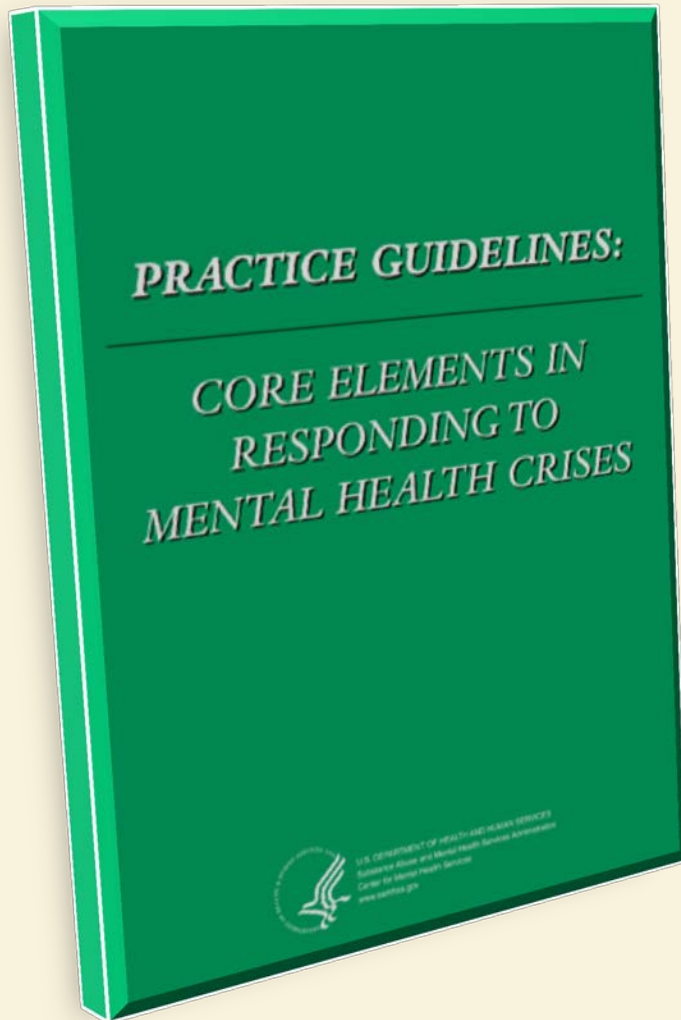


— Paolo del Vecchio

Comprehensive Crisis Response



Ten Essential Values of Crisis Services



1. Avoiding harm
2. Intervening in person-centered ways
3. Shared responsibility
4. Addressing trauma
5. Establishing feelings of personal safety
6. Based on strengths
7. The whole person
8. The person as credible source
9. Recovery, resilience, and natural supports
10. Prevention

Funding Crisis Services

- Medicaid:
 - 1915(i) Home and Community-Based Services state plan option
 - 1915(c) Home and Community-Based Services waivers
- SAMHSA Block Grants
- State funds
- Proposed SAMHSA grant program
 - \$5.2 million
 - New cohort of Mental Health Transformation Grants
 - To demonstrate a continuum of community-based crisis services for adults with serious mental illnesses and children with serious emotional disturbances

Call to Action

“Never let a good crisis go to waste.”

For More Information

SAMHSA

1 Choke Cherry Road • Rockville, MD • 20857

Phone: 1-877-SAMHSA-7 (1-877-726-4727)

TTY: 1-800-487-4889

Fax: 240-221-4292

<http://www.samhsa.gov>

CMHS

Phone: 240-276-1310

Fax: 240-276-1320

